



# MAZDA CX-8

We believe at the human potential;  
creativity, imagination and the amazing things  
we're all capable of when we're inspired.

We believe in taking the unconventional road  
and going the extra mile to do work that inspires.

We believe in artisans, designers, engineers and ambassadors  
who pour human energy into their work.

We believe in the power of cars to move human emotions.  
To awaken senses, heighten reflexes, make pulses race.

We believe the joy of being alive comes from  
what we discover from our journey,  
and the inspiration we find in every mile.

**MAZDA MAKES YOU FEEL ALIVE**





Specialty's  
café bakery

Business  
Catering

cookies • Priority PickUp • Business Catering Delivery

Specialty's  
bakery

Sour



CX-8





## THE STREAMLINED SEVEN-SEAT SUV

The elegant KODO design is at the heart of every Mazda SUV. The Mazda CX-8 has the flexibility of a large SUV, but with smaller dimensions without any compromise on interior space or cabin comfort.

Focusing on proportion, form and the smallest details, the flow of long lines creates a visual image that is strong, mature, and dignified. The addition of features such as roof rails and a low front bumper design brings out a unique combination of elegance and strength.





## BOSE SOUND SYSTEM

The BOSE® premium audio system is equipped with 10 speakers with a wide bass range that allows for better crossover points for better sound frequencies. All of this results in accurate musical sound not only from the highest treble notes but also from the lowest bass notes.

## MAZDA CONNECT KEEPS YOU IN TOUCH

Mazda Connect gives you a versatile internet connection while you're driving. The Audio System feature that is presented allows you to access multiple audio sources including AM/FM radio players and portable music players. You can also access social networks such as Facebook and Twitter through the available communication features. And the navigation feature can provide directions to the destination you specify.



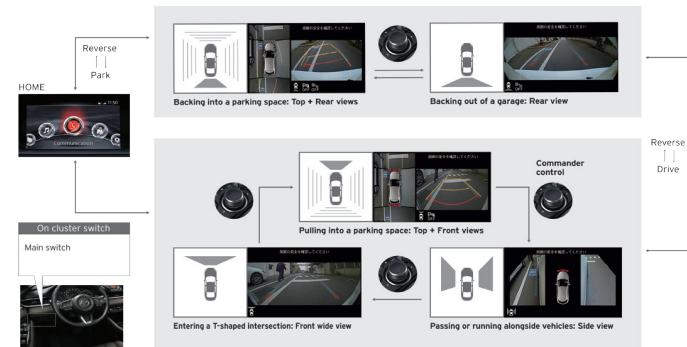
## CAPTAIN SEAT WITH CENTER CONSOLE

The second row seats are covered with nappa leather quality material, equipped with a Center Console which in addition to adding luxury and providing a storage compartment for drinks and personal items, it is also equipped with seat warmers.



## G-VECTERING CONTROL PLUS (GVC PLUS)

GVC Plus as Mazda's human-centric engineering method makes vehicle movement more responsive, inviting more confidence and comfort. When entering corners, the GVC Plus temporarily lowers engine rpm, to transfer weight and increase front wheel grip. During vehicle cornering, engine torque is normalized to transfer weight backwards and improve stability. At the end of the bend braking force is applied to the outer wheels to help return the vehicle to a straight position. The lag-free system and behind-the-scenes control reduce the need for steering correction, smoothing the effects of gravity to reduce driver body sway and fatigue from driving.



## 360 VIEW MONITOR SYSTEM

Using four cameras on the front, side and rear of the car, this system shows the area around the car on the monitor. Eight parking sensors at the front and rear detect close proximity, obstacles, as well as sound alarms. The system also helps get the perception of blind spots. This technology really helps avoid danger because the driver can see blind spots. Each camera angle can also be easily controlled via the touch screen or command control.

### 7-INCH TFT MULTI INFORMATION DISPLAY

The seven-inch TFT LCD screen in the center provides flexibility in monitoring while driving. In addition to vehicle speed, it also shows various vehicle information clearly and easily readable from the driver's line of sight.



### ELECTRIC SUNROOF

The window located on the roof of the cabin allows the driver and passengers to get additional lighting. In addition, the Electric Sunroof allows it to be opened via a button, making it easier for air to flow into the cabin.



### HANDS-FREE POWER LIFTGATE

The hands-free power liftgate lets you open and close the trunk door even when your hands are full by simply placing your foot under the sensor located under the rear bumper.



### FRAMELESS AUTO-DIMMING INNER MIRROR



The center mirror has an auto-dimming feature so that it can automatically dim the blinding light from behind when driving at night.



## WIRELESS SMARTPHONE INTEGRATION

Featuring an integrated system that allows the driver to control his/her phone from the central display. This setting is assisted through the MZD Connect with a wireless feature, eliminating the needs for a cable-connected cellphone.



## WIRELESS SMARTPHONE CHARGER (QI)

The tray on the center console is equipped with a Qi wireless charger\* which enables wireless charging of compatible smartphones and gadgets while the vehicle's engine is running.



## 2<sup>ND</sup>-ROW ELECTRIC SEAT ADJUSTMENT

Driver's seat arrangement can be done electrically in 8 directions, making it possible for every driver to get the ideal driving position while driving. It is also equipped with two-seat configuration storage memory feature that makes it easier to adjust when the driver changes.

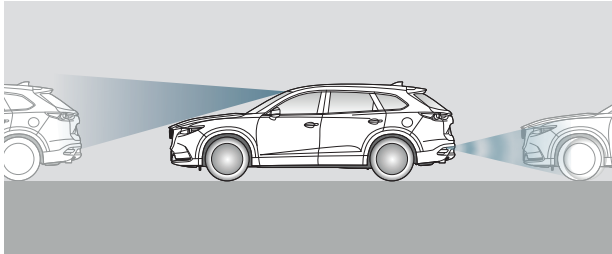


## VENTILATED 1<sup>ST</sup> & 2<sup>ND</sup> ROW SEAT

The ventilation system draws hot and humid air from areas where the passenger's body is in contact with the seat surface, providing a more comfortable driving environment. This system offers three-stage control of ventilation power.

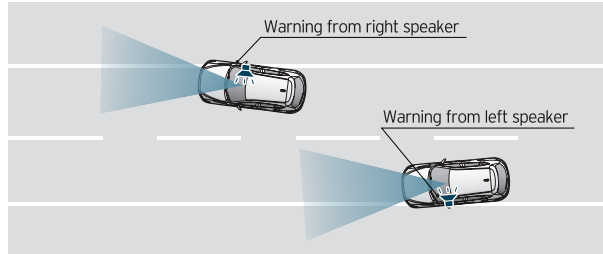


# i-ACTIVSENSE



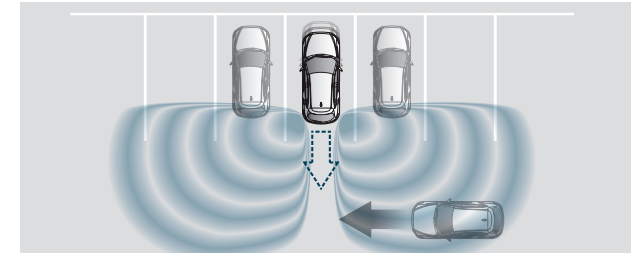
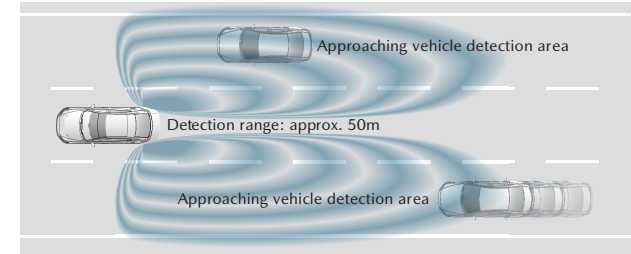
## SMART CITY BRAKE SUPPORT [FRONT/REAR] (SCBS F/R)

SCBS F/R can detect vehicles both in front and behind the vehicle, and automatically applies the brakes to help prevent accidents. The system operates at speeds of up to 30 km/h, the front detection camera has been updated to have a wider coverage area. When reversing, the system operates at a speed between about 2 and 8 km/h and detects obstacles using ultrasonic sensors.



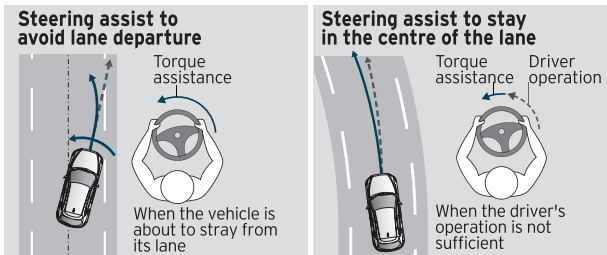
## LANE DEPARTURE WARNING SYSTEM (LDWS)

LDWS recognizes lane markings on road surfaces. When a predictable lane change, the system will issue a warning sound that sounds similar to the sound a car makes when traveling into a rumbling lane, so the driver can immediately make steering corrections. This system will be deactivated when the driver is detected using a turn signal to change lanes.



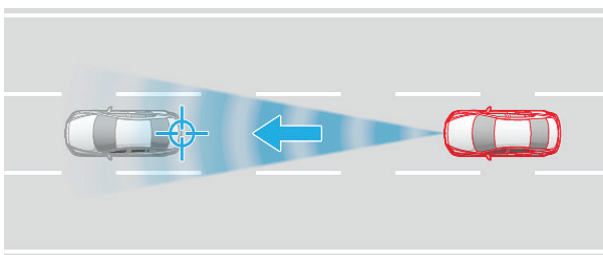
## BLIND SPOT MONITORING (BSM) REAR CROSS TRAFFIC ALERT (RCTA)

The BSM and RCTA use the same sensors to alert the driver when it detects a vehicle approaching from behind and both sides of the blind spot. RCTA is active when the car is in reverse. Warnings are given by flashing indicators on the mirrors and by sound.



## LANE-KEEP ASSIST SYSTEM (LAS)

A front-facing camera can detect lane markings and help your steering wheel stay in a safe lane. This advanced system will also notify you when an accidental lane change occurs by vibrating the steering wheel or with an alarm. In case of accidental lane change (detected use of turn signals, etc.) steering assist is canceled and no warning is given. The system operates at a speed approximately above 60km/h.



## MAZDA RADAR CRUISE CONTROL

Mazda Radar Cruise Control (MRCC) uses millimeter wave radar to assess speed and distance relative to the car in front and automatically controls vehicle speed. Working within a predetermined speed range, the MRCC automatically adjusts and maintains a safe distance from the car in front, thereby reducing the driver's burden on long trips and highways.

# EXTERIOR AND INTERIOR COLOURS

## BODY COLOURS



Soul Red Crystal Metallic (46V)



Machine Grey Metallic (46G)



Snowflake White Pearl Mica (25D)



Jet Black Mica (41W)



Platinum Quartz Metallic (47S)

## SEAT MATERIALS



Nappa Leather, Deep Red

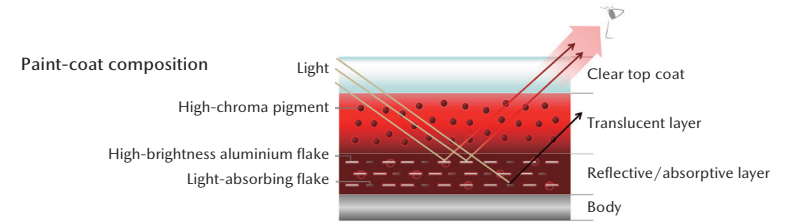
## 19-INCH WHEEL



Aluminum Bright

## TAKUMI-NURI

TAKUMI-NURI (TAKUMI: craftsman, NURI: painting), is Mazda's unique vehicle painting technology performed with an unprecedented combination of colors, highlights, shadows and color depth. Emphasizing the beauty and quality of the body shape of the dynamic KODO design. The Mazda 2 includes two new TAKUMI-NURI colors: Machine Gray Metallic and Soul Red Crystal Metallic. Soul Red Crystal Metallic's eye-catching color highlight, depth of color, and extraordinary transparency give a strong sense of emotional energy, a luxurious and impressive appearance.



**MAZDA CONTACT CENTER**

1-500-985 (24 HOURS)

0811-1500-985 (OFFICE TIME & WHATSAPP CHAT ONLY)

customer.info@mazda.co.id

**EUROKARS GROUP**

PT EUROKARS MOTOR INDONESIA

Please visit our website [www.mazda.co.id](http://www.mazda.co.id)

# MAZDA CX-8

## MAJOR SPECIFICATIONS AND EQUIPMENT

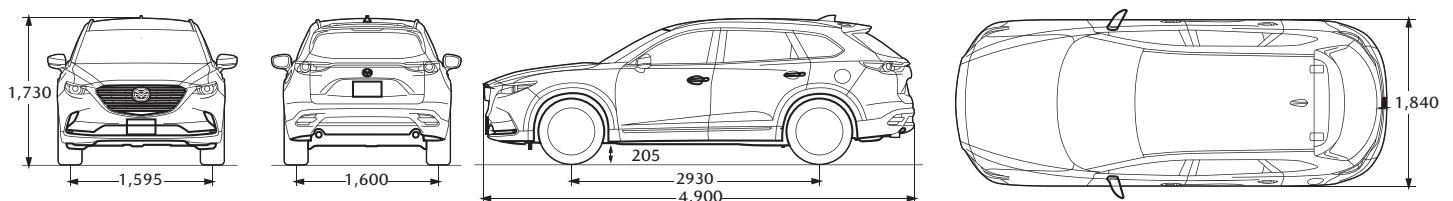


### SPECIFICATIONS

		MAZDA CX-8	
Drivetrain		2WD	
<b>DIMENSIONS &amp; WEIGHTS</b>			
Overall length (without number-plate holder)	mm	4,900	
Overall width (with wheel arch mouldings)	mm	1,840	
Overall height (with shark fin antenna)	mm	1,730	
Wheelbase	mm	2,930	
Tread (with steel wheels/aluminium wheels)	Front	mm	1,595
	Rear	mm	1,600
Overhang (without number-plate holder)	Front	mm	950
	Rear	mm	1,020
Ground clearance (between axles)	Unladen	mm	205
Minimum turning radius(kerb-to- kerb)	Kerb to kerb	m	5.8
Luggage capacity	with all seats unfolded, up to ceiling	L	209
	with 3rd-row seats folded, up to ceiling	L	775
Curb weight	90% fuel filled	kg	1,792
<b>ENGINE</b>			
Type	SKYACTIV-G 2.5 In-line, 4-cylinder DOHC 16 valve		
Displacement	cc	2,488	
Bore x stroke	mm	89.0 x 100.0	
Compression ratio	13.0 : 1		
Maximum output	EEC	kW (ps)/rpm	140 (190)/6,000
Maximum torque	EEC	Nm/rpm	252/4,000
Fuel tank capacity	L	72	
<b>STEERING</b>			
Type	Rack and pinion		
Power steering type	Electric Power-Assisted Steering		
<b>DRIVETRAIN</b>			
Transmission type	6-speed automatic		
Gear ratios	1st	3.552	
	2nd	2.022	
	3rd	1.452	
	4th	1.000	
	5th	0.708	
	6th	0.599	
	Reverse	3.893	
Final gear ratio	4.957		
<b>SUSPENSION</b>			
Type	Front	MacPherson strut	
	Rear	Multi-link	
<b>BRAKES</b>			
Type	Front	Ventilated discs	
	Rear	Solid discs	
Diameter	Front	mm	320
	Rear	mm	325
Parking	Electric (EPB)		
<b>TYRES &amp; WHEELS</b>			
Tyre size	255/55R19		
Wheel size	19X7J		

### DIMENSIONS Unit: mm

Mazda CX-8



# MAZDA CX-8



## EQUIPMENT

		MAZDA CX-8
		Elite
<b>MECHANICAL</b>		
Drive Selection		●
<b>EXTERIOR</b>		
Tyres & wheels	255/55R19 with 19X7J aluminium wheels	●
Front Wipers	Timing adjustable, with rain sensor	●
Headlamps	LED type, with automatic leveling	●
	Daytime running lamp	●
	Lighting signature	●
	Automatic on/off function	●
Front fog lamps	LED type	●
Rear combination lamps	LED type	●
	Lighting signature	●
Power liftgate	with hands-free function	●
<b>INTERIOR</b>		
Steering wheel	Leather	●
	Audio control switches	●
Shift knob	Leather	●
Audio system	AM/FM radio	●
	8-inch center display, commander control	●
	Bose® premium sound system, 10-speakers	●
	Wireless Smartphone Integration	●
Wireless Smartphone Charger (Qi)		●
Active driving display	Windscreen type	●
Meter Set	with 7-inch TFT multi information display	●
Bluetooth® hands-free system		●
External device connection hub	AUX jack, USB port	●
Automatic air-conditioner	Front (dual zone) & rear	●
Armrests, floor console lid & knee pads	Soft + stitch	●
Inner mirror (Day/Night Adjustment)	Auto	●
<b>SEATS</b>		
Seat upholstery	Nappa Leather (Deep Red)	●
Front seats	Adjustable head restraints	●
	Power tilt, lift, lumbar support, slide, reclining (driver's side)	●
	Power lift, slide, reclining (passenger's side)	●
	Power adjustment memory (driver's side)	●
	Seat ventilation	●
Second-row seats	Adjustable head restraints (for all occupants)	●
	Captain seat, electrically adjustable	●
	Seat warmer & seat ventilation	●
	Centre console with USB port & cup holder	●
	Sunshade	●
Third-row seats	Reclining, 50:50-split fold-down mechanism	●
	USB port	●
	50:50-split fold-down mechanism	●
<b>SAFETY - ACTIVE Standard</b>		
Antilock Brake system (ABS) with Electronic Brakeforce Distribution (EBD) and Brake Assist (BA)		●
Dynamic Stability Control (DSC) and Traction Control System (TCS)		●
Hill Launch Assist (HLA)		●
Emergency Stop Signal (ESS)		●
G-Vectoring Control (GVC Plus)		●
Front and Rear parking sensors		●
360° view monitor		●
<b>SAFETY - PASSIVE Standard</b>		
Airbags	Dual front	●
	Curtain & side	●
ISOFIX child-seat anchors	For rear seats	●
High-mount stop lamp		●
Side-impact door beams		●
Collapsible steering shaft & injury-minimizing brake pedal		●
Neck injury mitigation front seats		●
Ring Structure unibody construction	SKYACTIV-BODY	●
<b>SAFETY - i-ACTIVSENSE</b>		
Mazda radar cruise control (MRCC) [<30km/h]		●
Smart brake support (SBS) & Forward obstruction warning (FOW)		●
Smart City Brake Support (SCBS) [Forward & Reverse]		●
Adaptive Front-lighting System (AFS)		●
High-beam control (HBC)		●
Blind Spot Monitoring (BSM) and Rear Cross Traffic Alert (RCTA)		●
Lane Departure Warning System (LDWS)		●
Lane Keep Assist System (LAS)		●
Pedestrian Brake (F)		●
<b>SECURITY</b>		
Power door lock		●
Auto door lock	One touch release (driver)	●
Immobilizer & burglar alarm		●

